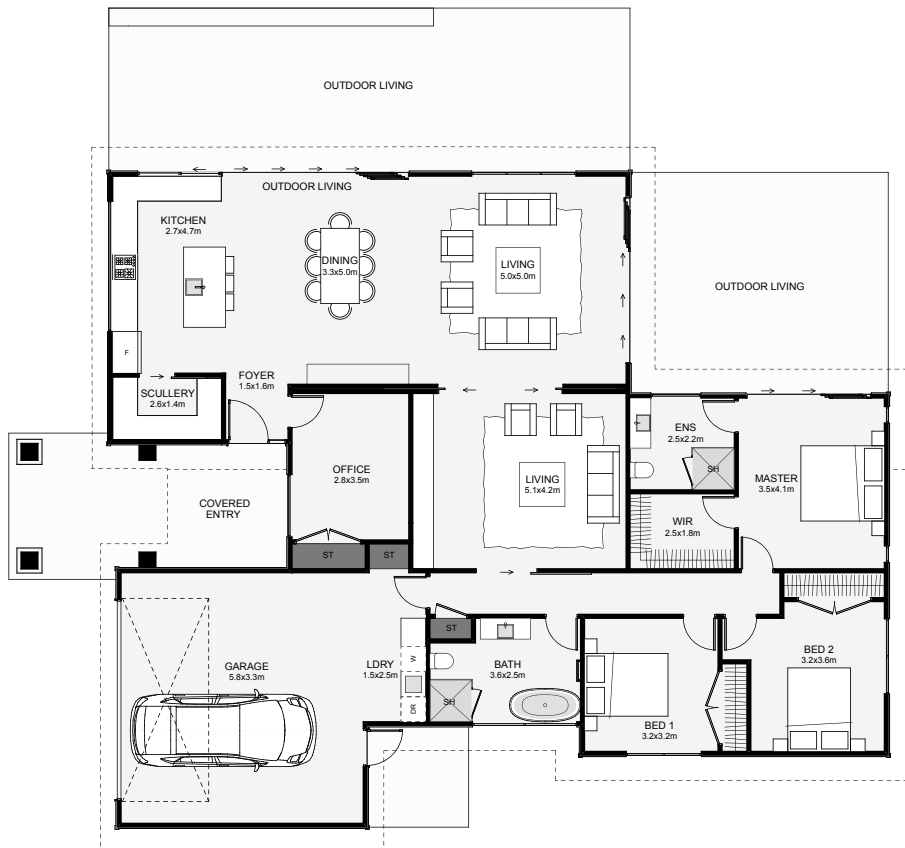




A graceful twin-mono roofline with a stone column entrance will have you feeling like you're home! If you work from home, no worries, a separate office is positioned just off the foyer. Close off or open up both living spaces depending on the occasion. With plenty of space, a scullery, walk-in wardrobe and ensuite, this new home doesn't leave anything off that list!



Floor Area: 220m²

 2
  4
  2
  2
  20.8m
  15.7m

Contact Glen:

Ph: 0274 626 101

E: info@glenarmstrongbuilders.co.nz

www.glenarmstrongbuilders.co.nz

